

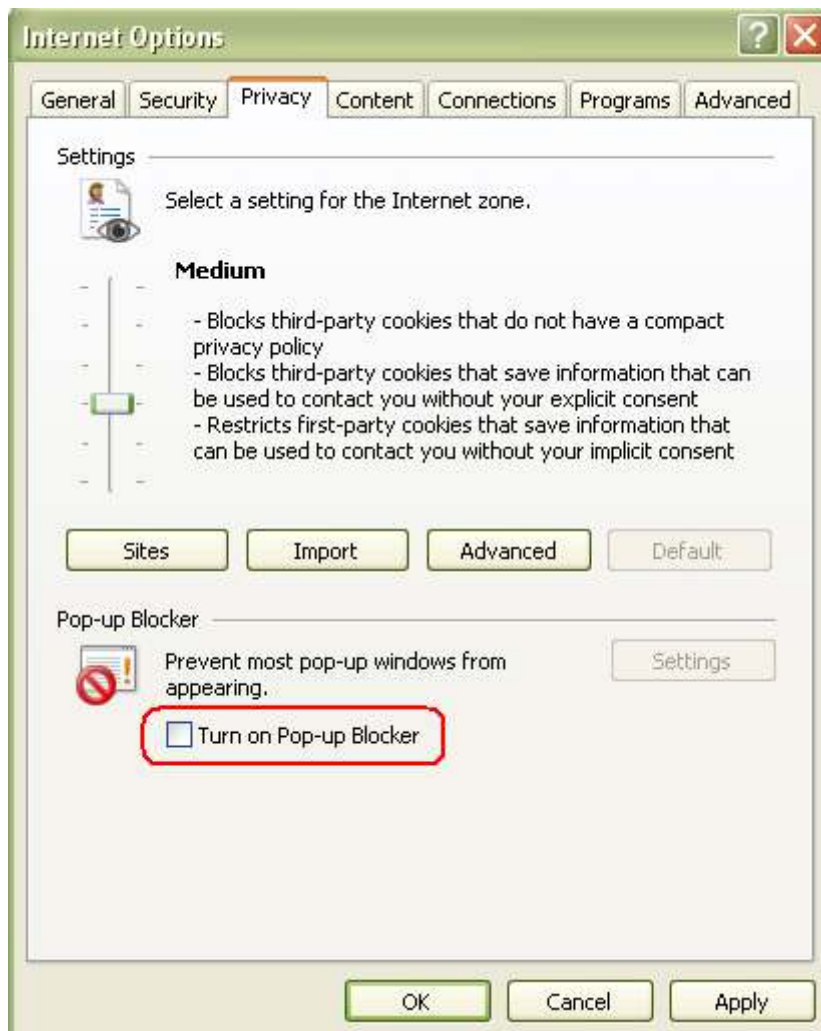
Report Checking Notice

1. The report needs to be opened with Adobe Reader 7.0. If you want to download this software, please click here <http://www.adobe.com/cn/products/acrobat/readstep2.html>

2. Please set your IE browser as "Temporarily Allow Pop-ups", so as to display the report normally.

Please check your computer setting by below step:

IE Browser---Tool---Internet Option---Privacy



3. If you want to check Taiwan report, please visit http://twap.sgs.com/sgsrsts/en/cheres_en.asp
Report No. begin with: **Taipei** (CE、CV、CM、CY、CX、CS、CR、CH), **Kaohsiung** (KA、KC).
When key in report No. in Taiwan system, " / " can't be omitted. E.g.: **CX/XXXX/XXXX**

4. If you want to check Korea report, please visit http://rohs.kr.sgs.com/sgsrsts/en/cheres_en.asp
E.g.: GPXX-XXXX, F690501/LF-CTS **AYAUXX-XXXXXX**